

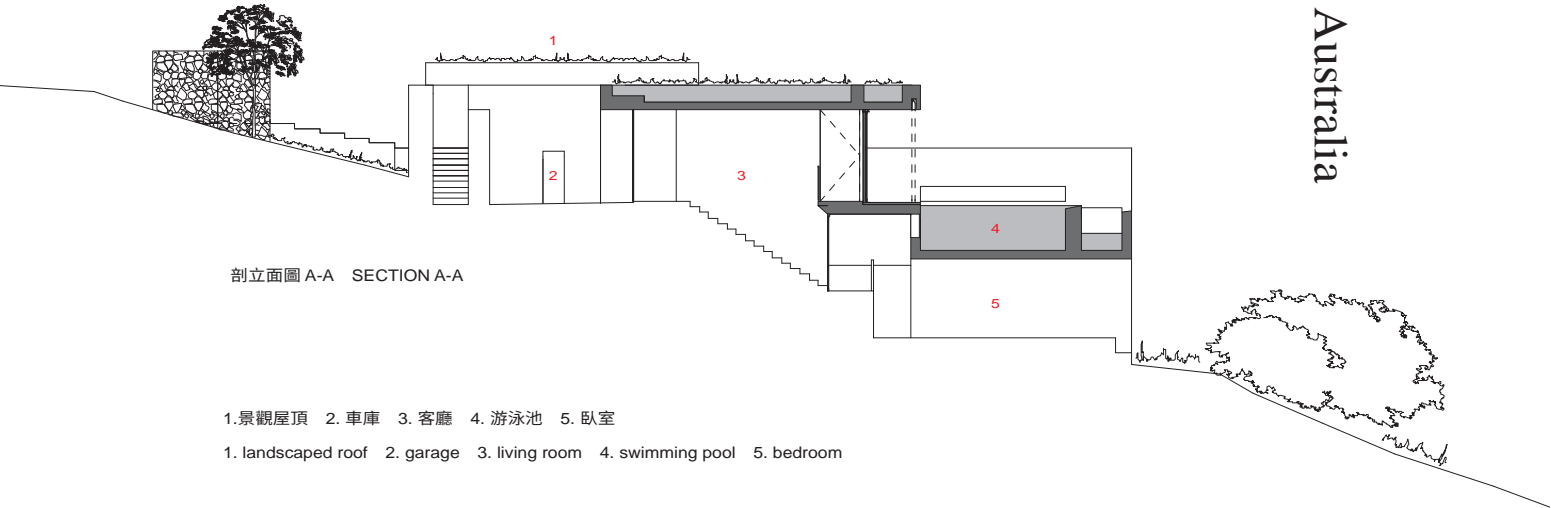


# AZURIS, Hamilton Island, Australia

澳大利亞漢密爾頓島 艾希而斯度假屋  
雷納托·迪托雷建築事務所  
Renato D'Ettore Architects

主要建築師：雷納托·迪托雷  
結構工程：Birzulis Associates, Pty Ltd  
施工單位：Coastal Edge Constructions  
空間性質：度假屋  
建築面積：222平方公尺  
基地面積：2,336平方公尺  
主要建材：混凝土、玻璃、天然石材  
座落位置：澳大利亞昆士蘭州漢密爾頓島  
影像：弗朗西斯·潔法納利  
採訪：劉湘怡  
文字：雷納托·迪托雷  
整理：吳佳陵

Principal Architect：Renato D'Ettore  
Structural Engineering：Birzulis Associates, Pty Ltd  
Contractor：Coastal Edge Constructions  
Character of Space：Holiday Home  
Total Floor Area：222 m<sup>2</sup>  
Site Area：2,336 m<sup>2</sup>  
Principal Materials：Concrete · Glass · Natural Stone  
Principal Structure：Concrete  
Location：Hamilton Island, QLD, Australia  
Photos：Francesca Giovannelli  
Interview：Rowena Liu  
Text：Renato D'Ettore  
Collator：Chia Ling Wu



右頁：度假屋坐落於西澳山腰上，室內以堅固的磚石鑿刻而成

漢密爾頓島 (Hamilton Island) 的艾希而斯住宅 (AZURIS) 是一間三房度假屋，坐落於西澳山腰上，俯瞰著澳洲珊瑚海 (Australian Coral Sea)，傲立在一片獨特的熱帶環境中。其設計呼應著漢密爾頓島的三大要素：陽光、空氣和水，並以極簡的外型向周遭的美麗致敬。住宅內一系列的簡單空間是由堅固的磚石鑿刻而成，除了造成既重且輕的感覺外，也確保其可久耐亞熱帶氣候且易於維護。走近屋子時，種植著當地樹種的綠色屋頂便吸引了目光，並進一步將視線牽引至屋後的海平面。透過涼爽、遮陰和通風的原則柔和周遭元素的設計呈現出純然現代風格，包括落地玻璃推門的涼亭型建築、遼闊的環屋水池和寧靜的屋內庭院。水在這裡除了作為視覺焦點外，也扮演著一個特殊的角色。主建築外環繞著一圈遼闊的水池，創造出一個引人注目的設計元素，也是將水的涼爽作用與視覺舒適感引入室內的重要關鍵。豪華水池的表面無邊際銜接海平面，西側點綴著其他島嶼和澳洲大陸的海洋環景盡收眼底。整棟住宅橫跨兩棟建築，皆以煤灰色漆為主的主牆面保護隱私，包含了在上方的主臥室、起居區和游泳池，在下層的客房和蓋頂的露台。西側完全無遮蔽，以飽覽海洋風光，兩面側牆和天然石牆則將擔負著建築物固定在斜坡上的功能。入口庭院直接通往主要起居室，燒烤鋼架已嵌入巨大的石牆，在距離廚房和用餐區不遠處打造出一個輕鬆的戶外烹飪區。游泳池正下方是下層的兩間客房，深遠的露台為它提供了帶框的景觀，也遮蔽了西曬的炙熱陽光。起居區寬敞的戶外區域可全天候遮蔭，因為較接近自然植被，適合躲避日曬高溫，也是理想的日落欣賞地點。

Azuris, located on Hamilton Island, is a three bedroom holiday home cascading on a western hillside overlooking the Australian Coral Sea with a command of its unique tropical surroundings. The design responds to three key elements of its island location: light, air and water. The simplicity of Azuris is a tribute to the beauty of its location. The home comprises a series of simple spaces carved out of robust masonry, generating a sense of both weight and lightness, and ensuring longevity and low maintenance in the subtropical climate. On approach, the house is visible as a green roof planted with native species, drawing the eye out further to the ocean's horizon beyond. The design, based on taming the elements by cooling, shading and ventilating, is strictly modern – adopting a pavilion form with floor to ceiling sliding glass doors, expansive wrap around pool and tranquil internal courtyards. Besides the focus on the view, water plays a special role. Wrapping around the main pavilion is an expansive pool, creating a dramatic design element, vital to introducing water's cooling and visual delight to the interior. The surface of the luxurious pool transfers seamlessly into the horizon with its unique ocean panorama, with other islands and Australia's mainland to the west. The house spans between two dominant painted anthracite-grey side walls for privacy, with the living area, main bedroom and swimming pool at the top, and the guest rooms and an undercover sheltered terrace on the lower storey. The western facade opens up entirely to the view of the ocean, whereas the two side walls and a natural stone wall anchor the building into the slope. The entrance courtyard opens directly onto the main living floor, and a steel barbecue has been integrated in the massive stone wall, creating a casual outdoor cooking zone not far from the kitchen and dining area. On the lower level directly under the swimming pool are two guest bedrooms with framed views set within deep terraces providing shade from the hot westerly sun. Also a generously proportioned open under cover living area is shaded throughout the day, ideal for escaping the heat whilst being closer to the natural vegetation and ideal for sunset viewing.

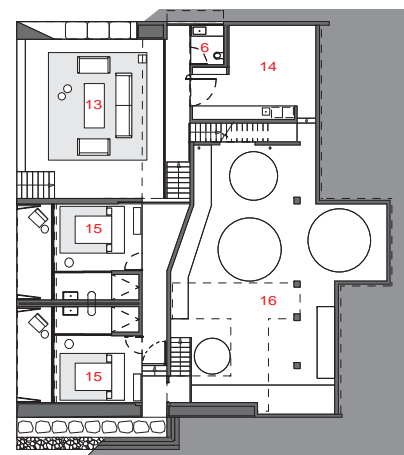




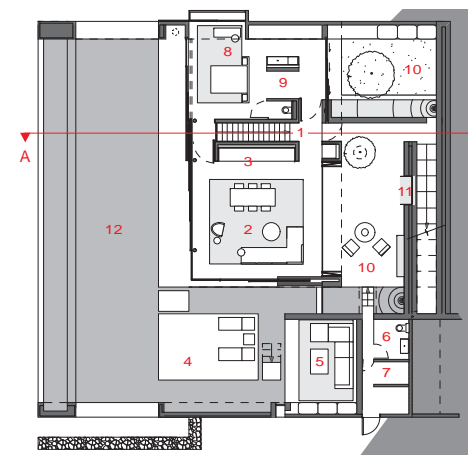
右頁・左頁：主建築外環繞著一圈  
遼闊的水池，創造出一個引人注目的設計元素



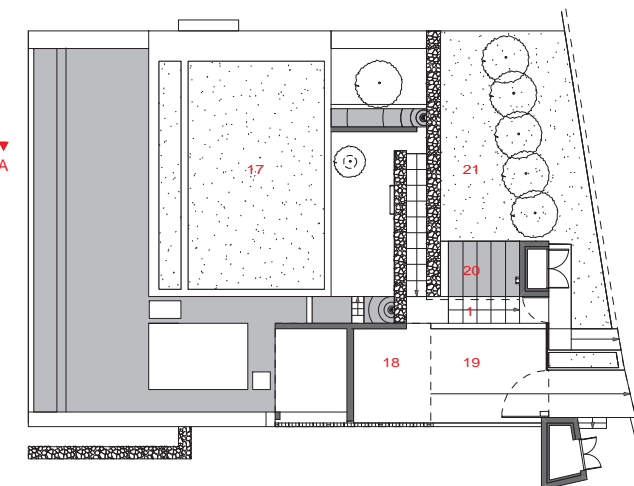
1. 入口 2. 客廳 3. 廚房 4. 水上休憩區 5. 起居室 6. 衛生間 7. 儲物間 8. 主臥室  
9. 淋浴間 10. 露台 11. 烤肉區 12. 游泳池 13. 日曬露台 14. 洗衣間 15. 臥室  
16. 發電室 17. 景觀屋頂 18. 車庫 19. 車道 20. 噴泉 21. 花園
1. entrance 2. living room 3. kitchen 4. pool island 5. lounge area 6. restroom 7. store room 8. master bedroom  
9. shower 10. terrace 11. barbecue 12. swimming pool 13. sunset terrace 14. laundry  
15. bedroom 16. ac plant room 17. landscaped roof 18. garage 19. lane 20. cascading fountain 21. garden



地下層平面圖 BASEMENT PLAN

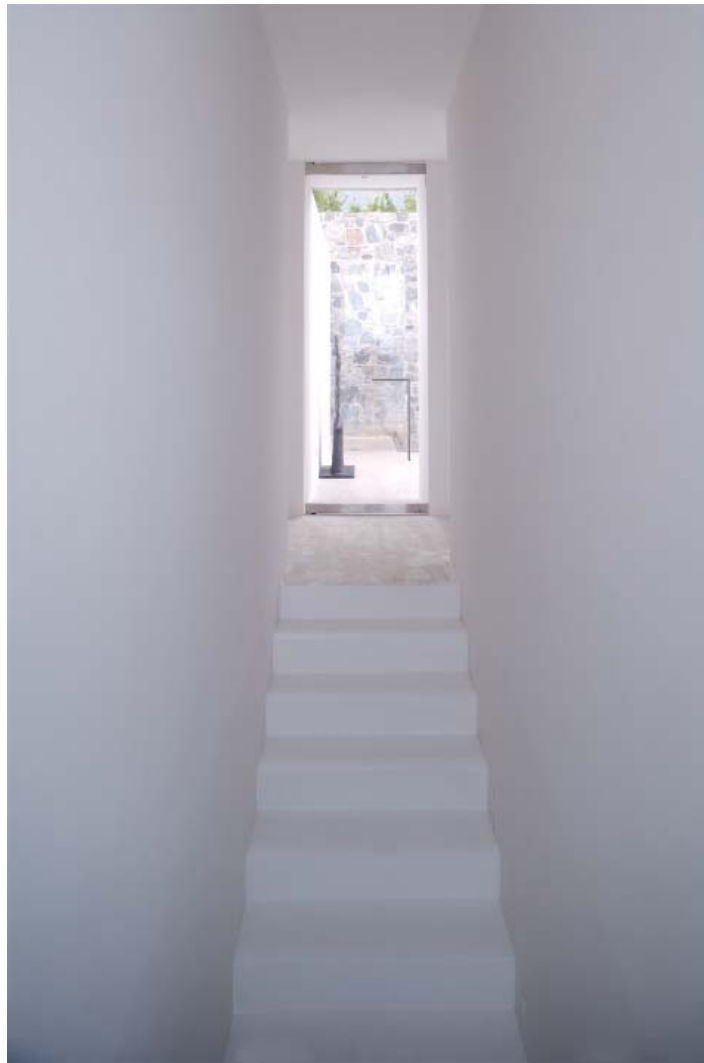


地面層平面圖 GROUND FLOOR PLAN



一樓平面圖 FIRST FLOOR PLAN





右頁：整棟住宅橫跨兩棟建築，皆以煤灰色漆為主的牆面保護隱私  
左頁：起居區寬敞的戶外區域可全天候遮蔭